



# BETSY PRICE COMMUNITY CENTER

---

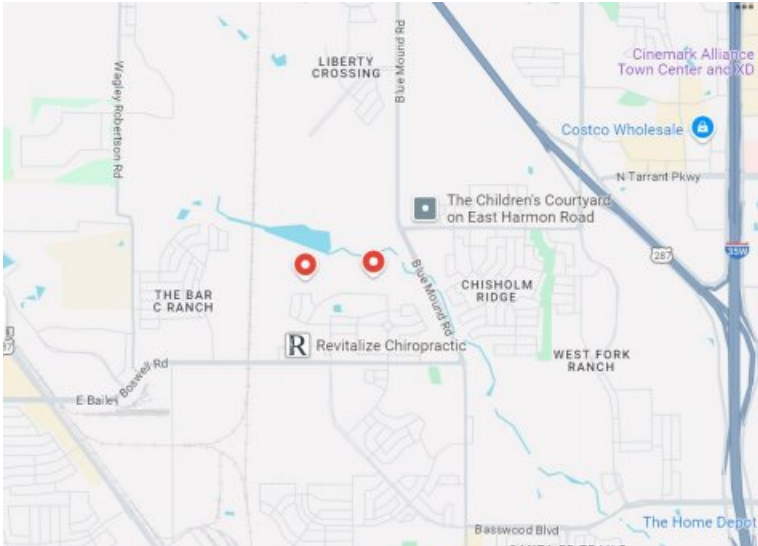
MAX PIERRE & VICTORIA LEACH



# WHEN ARE WE OPENING?

---

- March – Building Completion/Move In
  - April – Open to the Public
  - May – Grand Opening



# WHERE ARE WE LOCATED?

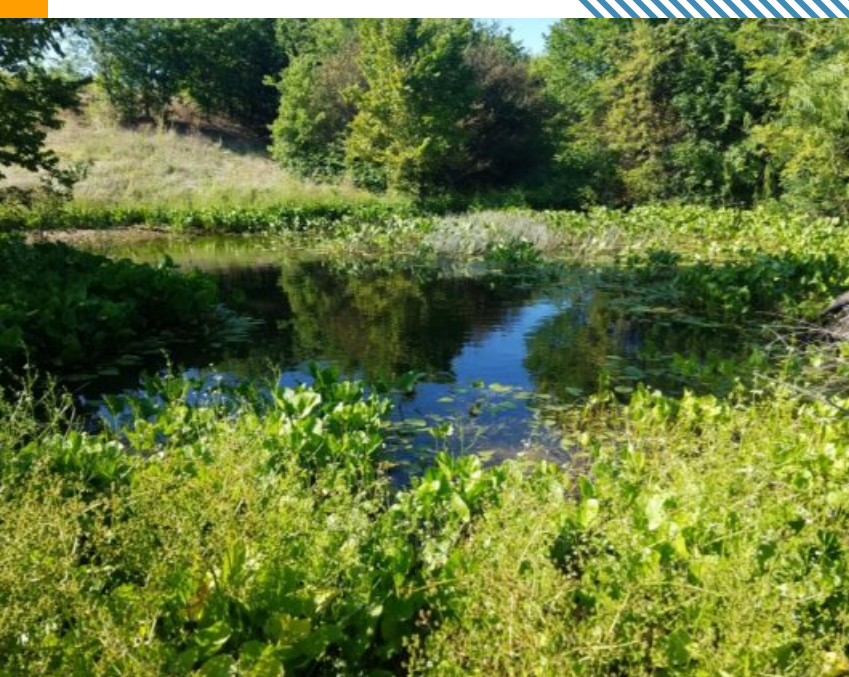
- 8375 Blue Mound Rd.
- **Crossroad** – Bailey Boswell & Blue Mound Rd.
- Between 287 & 35 on the West side of 35





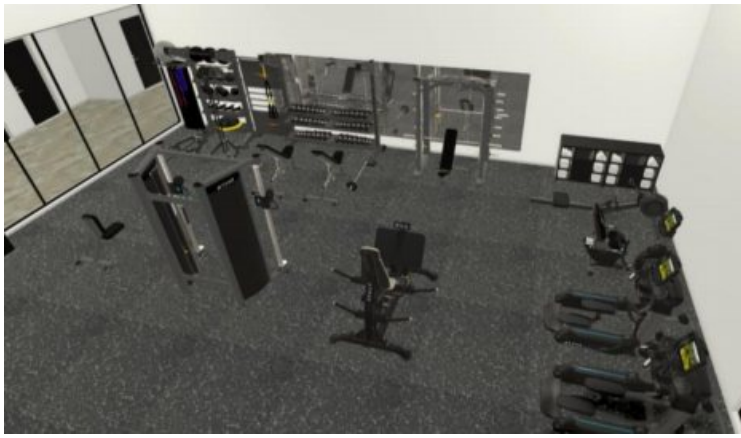
# HOURS OF OPERATION

- **Sunday: 12:00 – 4:00 PM**
- **Monday - Friday: 7:00 AM – 9:00 PM**
- **Saturday: 9:00 AM – 6:00 PM**
- **\*Closed on all major holidays**



# FAQ'S

- Located on Northwest Community Park
- 246 acre property
- Between 287 & 35 on the West side of 35
- 20,818 sq. ft facility
- Culinary Kitchen, Fitness Room, Gym, Patio
- Will not have a pool – Aquatics is ran separately. Will not have a sauna.
- City of Fort Worth facility but non-residents can still take advantage of the amenities & programs – may incur an additional cost.



# WEIGHT ROOM



1

CARDIO –  
TREADMILL, ARC  
TRAINER,  
ELLIPTICAL, BIKE,  
ROWER, STEPPER

2

STRENGTH –  
CHIN DIP, PEC  
FLY, ROW, LEG  
CURL, LEG  
EXTENSION

3

FUNCTIONAL  
FREEWEIGHT –  
BACK, SMITH, BENCH,  
HYPER EXTENSION,  
PLATE TREE, LEG  
PRESS

4

SPIN  
BIKES



FWPA

# ***OPEN PLAINS***

---

**An Artwork by Matthew Mazzotta for the  
Betsy Price Community Center**

# NARRATIVE

- The overall concept of OPEN PLAINS is to give the viewer the experience that they are connected with the surrounding open landscape even though they are inside the community center, drawing a connection to the larger park.
- As patrons enter the building, they can see through the glass doors a grassy berm in the middle of the lobby space. As they proceed further into the building, they will look up and see three (3) “Birds” flapping in the airspace above the berm. The grassy berm is designed to be climbed on, and several indents provide multiple organic seating arrangements.





**VIEW  
FROM  
ENTRY**

---



# VIEW OF BIRDS

---

# AFTER SCHOOL/SUMMER DAY CAMP

- After School Program

- 3 – 6PM, Monday – Friday
- \$40 pick-up, \$30 drop-off – per month
- Scholarships Available
- Will follow EMS Schedule
- Snack, Homework Help, Activities, Enrichment Clubs
- 1:15 Ratio
- Will also provide Break Camp
- Ages 5 – 13

- Summer Day Camp

- 7:30AM – 6PM, Off July 4 and July 19<sup>th</sup>
- \$65 per week
- Scholarships Available
- 8 weeks
- Lunch & Snack, Field Trips, Activities, Enrichment Clubs
- 1:15 Ratio



**Middle School After School Program provided as well\***

# PROGRAMS

## Youth

- Creative Movement
- Ballet/Jazz
- Tumbling
- Soccer Skills
- Floorball
- Homeschool PE
- 3D Printing



## Adult

- Zanart
- Yoga
- Tai Chi Level 1 & 2
- Floorball – Open Gym
- Cricuting 101
- Sew & Grow
- Zumba



## Active Older Adult

- Tai Chi Level 1 & 2
- Woodcarving
- Bingo
- Sew & Grow
- Zanart
- Functional Movement
- Sixty & Better





# SPECIALIZED PROGRAMMING & OPEN GYM

## Programming

- Homeschool PE & Ballet/Combo Classes
- Outdoor Education
- Teen Leadership Program
- Adapted Programming – Dream Club

## Open Gym

- Basketball
- Volleyball
- Pickleball
- Floorball



# EVENTS



- Cultural Events
- Running Club/C.A.L.F Run
- Unified Dance – Sensory Friendly Prom
- Easter Eggstravaganza
- Teen Glow Hunt
- Movie In The Park
- Mothers/Fathers Day
- Dog Adoption
- Parents Night Out
- Back To School
- Bingo & Brunch
- Rummage Sale
- Tents, Tales & Trails
- National Night Out
- Fall Festival
- Veterans Day Lunch
- Turkey Shootout
- Senior Holiday Brunch
- Diaper & Toy Drive
- Breakfast With Santa

# OUTDOOR ACTIVITIES

- Fishing
- Kayaking
- Archery
- Camping
- Geocaching
- Stargazing
- Nature Walks
- Outdoor Sports

**PARTNERSHIPS  
WITH NATURE  
CENTER, TEXAS  
PARKS & WILDLIFE,  
BOTANIC GARDEN,  
KEEP TEXAS  
BEAUTIFUL, 4-H**



# RENTALS



- \$150 refundable deposit
- Affordable
- After Hours Rentals
- Culinary Kitchen
- Weddings
- Parties
- Meetings
- Sporting Events

Room	Pricing
Large Multi-Purpose	\$60/Hr
Medium Multi-Purpose	\$40/Hr
Kitchen	\$30/Hr
Gymnasium – Full Court	\$75/Hr
Gymnasium - Half Court	\$40/Hr
Gym Floor Cover	\$50 flat rate
After Hour Staffing Fee	\$35/Hr



# MEMBERSHIP PRICING

Package	Monthly Resident Rate	Monthly Non-Resident Rate	Yearly Resident Rate	Yearly Non-Resident Rate
Youth (17 & Under)	N/A	N/A	FREE!	\$20
Adult	N/A	N/A	\$40 /Year	\$80 /Year
Senior (60+)	N/A	N/A	\$20 /Year	\$40 /Year
Youth - Fitness	\$19	\$38	\$145	\$290
Adult - Fitness	\$24	\$48	\$190	\$380
Senior - Fitness	\$18	\$36	\$140	\$280
Family - Fitness	\$52	\$104	\$540	\$1080

City of Fort Worth



**YOUTH SPORTS, AFTER SCHOOL,  
SUMMER CAMP, EVENT ASSISTANCE,  
SENIOR & TEEN PROGRAMMING**



# ADVISORY COUNCIL

## Objectives

- Are you hoping to make a difference in the community?
- Would you like to have a voice in what is offered at Betsy Price Community Center?
- Would you like to connect with others while supporting your community?
- Promote program opportunities and special events
- Provide and expand volunteer participation
- Generate and administer the Council's funds in a manner that maximizes the benefit to the community center and ensure proper handling of funds
- Promote programs for the center and seek input from the community so that you can advise staff needs and preferences

# OFFICERS & MEMBERS



# WE WANT YOUR FEEDBACK!

---

Help shape the future of Betsy Price Community Center by sharing your thoughts and ideas! Your feedback will guide us in creating a space that meets the needs of the community.



# CONTACT INFORMATION

- Rebecca “Victoria” Leach – Community Center Coordinator
  - [Rebecca.leach@fortworthtexas.gov](mailto:Rebecca.leach@fortworthtexas.gov)
  - 817-965-6859
- Max Pierre – District Superintendent – District 1
  - [Maxime.Pierre@fortworthtexas.gov](mailto:Maxime.Pierre@fortworthtexas.gov)
- Brittney Sanders – Sr. Recreation Programmer
- Seth Deen – Recreation Programmer
- Center Email:
  - [BPCC@fortworthtexas.gov](mailto:BPCC@fortworthtexas.gov)



# THANK YOU

---

Any Questions?